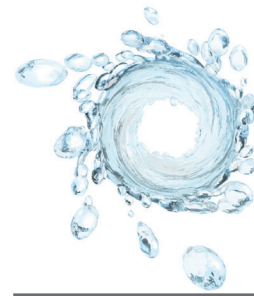
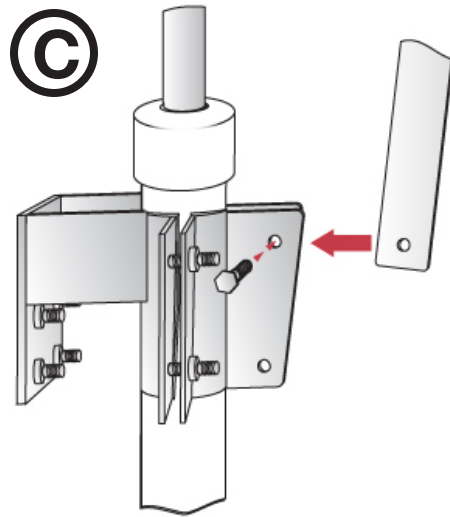


1. The Fulcrum Rod (C) is bolted to the mounting bracket as shown, using a 3/8-16 x 1 1/4" bolt.
2. No washers or nuts are required. The bracket is pre-threaded.

The handle assembly comes preset at the 6" pivot hole. If a longer stroke is desirable, the pivot point may be changed to the 8" hole. This will make pumping harder, but will deliver more water per stroke.



Assembly Instructions

Stainless Steel Removable Handle

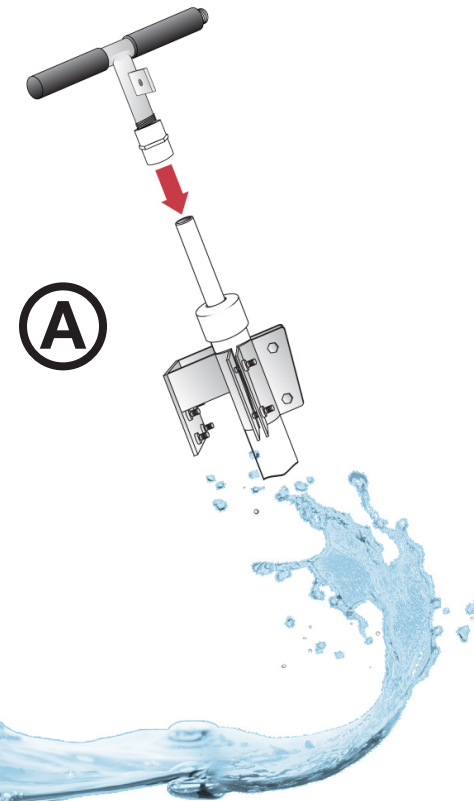
for Original PVC F-Series hand pump kits

UNDERSTAND THOROUGHLY PRIOR TO INSTALLATION

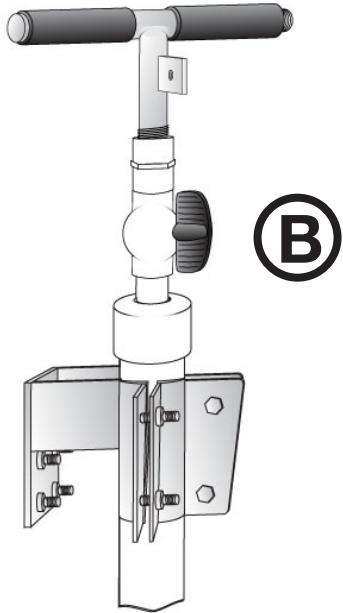
Your Removable Stainless Steel Handle comes with a threaded PVC adapter pre-installed from the factory. This PVC adapter attaches to your pump shaft for easy handle removal. You will attach the PVC adapter to the 3/4" pump rod as shown in illustration (A), using standard PVC cleaner, primer and glue.

If your pump is new, you may choose to install the ball valve (included with your pump) or not.

If you plan to use the ball-valve for pressurizing your home plumbing system, glue it to the pump first, and then install the stainless handle above the ball valve as show in illustration (B). Sacrifice the unused 3/4" PVC handle parts as needed.



Attaching the stainless steel removable handle is easily done as the new pump is being assembled. If your FloJak is already installed, lift the PVC handle a foot or so, and cut it off under the ball valve.



Caution--Be very careful NOT to drop the pump shaft into the pump. Retrieval is difficult. As a precaution, lift the handle and tape a cross piece of pipe to the 3/4" shaft to keep it from dropping as you work.

Now you may simply glue the PVC coupler attached to stainless handle into place.

Very Important--Allow it to cure for 24 hours before pumping.

To remove the handle after pumping, grip the PVC fitting and simply twist the handle. Then install a threaded plug to keep debris from entering the pump.



Assembly Instructions

MiniJak Pump Assist Handle
for Flojak Plus & Stainless Steel Removable Handle

UNDERSTAND THOROUGHLY PRIOR TO INSTALLATION

If you are using the MiniJak Pump-Assist Extension Handle, read and follow the instructions below.

The MiniJak is pre-assembled from the factory. Installation is easy and requires only two bolts for attaching as follows:

1. The Handle (A) attaches to the Stainless Steel tab (B) on the pump using a 1/4-20 x 2" Eye-Bolt and a Wing nut.
2. A Nylon washer is provided to reduce friction between the fulcrum rod and the stainless steel tab while pumping.

